

## Product datasheet for **TA359495**

### PRUNE (PRUNE1) Rabbit Polyclonal Antibody

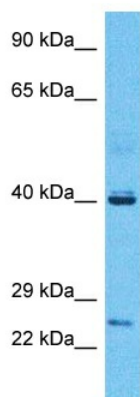
#### Product data:

Product Type:	Primary Antibodies
Applications:	WB
Reactivity:	Human
Host:	Rabbit
Clonality:	Polyclonal
Immunogen:	The immunogen is a synthetic peptide directed towards the C-terminal region of Human PRUNE
Specificity:	<b>Expected reactivity:</b> Human
Formulation:	Liquid. Purified antibody supplied in 1x PBS buffer with 0.09% (w/v) sodium azide and 2% sucrose. <i>Note that this product is shipped as lyophilized powder to China customers.</i>
Concentration:	lot specific
Purification:	Affinity purified
Conjugation:	Unconjugated
Storage:	For short term use, store at 2-8°C up to 1 week. For long term storage, store at -20°C in small aliquots to prevent freeze-thaw cycles.
Stability:	Shelf life: one year from despatch.
Predicted Protein Size:	42kDa
Gene Name:	prune exopolyphosphatase
Database Link:	<a href="#">Entrez Gene 58497 Human Q86TP1-2</a>
Background:	This gene encodes a member of the DHH protein superfamily of phosphoesterases. This protein has been found to function as both a nucleotide phosphodiesterase and an exopolyphosphatase. This protein is believed to stimulate cancer progression and metastases through the induction of cell motility. A pseudogene has been identified on chromosome 13. Alternative splicing results in multiple transcript variants.
Synonyms:	DRES-17; DRES17; hPrune; HTCD37



[View online »](#)

## Product images:



Host: Rabbit  
Target Name: PRUNE  
Sample Tissue: Fetal Liver Lysate  
Antibody Dilution: 1.0 $\mu$ g/ml

Host: Rabbit  
Target Name: PRUNE  
Sample Type: Fetal Liver lysates  
Antibody Dilution: 1.0ug/ml