

Product datasheet for **TA359492**

PRPF4 Rabbit Polyclonal Antibody

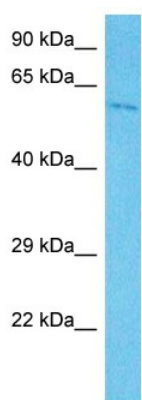
Product data:

Product Type:	Primary Antibodies
Applications:	WB
Reactivity:	Human
Host:	Rabbit
Clonality:	Polyclonal
Immunogen:	The immunogen is a synthetic peptide directed towards the middle region of human PRPF4
Formulation:	Liquid. Purified antibody supplied in 1x PBS buffer with 0.09% (w/v) sodium azide and 2% sucrose. <i>Note that this product is shipped as lyophilized powder to China customers.</i>
Concentration:	lot specific
Purification:	Affinity purified
Conjugation:	Unconjugated
Storage:	For short term use, store at 2-8°C up to 1 week. For long term storage, store at -20°C in small aliquots to prevent freeze-thaw cycles.
Stability:	Shelf life: one year from despatch.
Predicted Protein Size:	522
Gene Name:	pre-mRNA processing factor 4
Database Link:	NP_001231855.1 Entrez Gene 9128 Human O43172
Background:	The protein encoded by this gene is part of a heteromeric complex that binds U4, U5, and U6 small nuclear RNAs and is involved in pre-mRNA splicing. The encoded protein also is a mitotic checkpoint protein and a regulator of chemoresistance in human ovarian cancer. Two transcript variants encoding different isoforms have been found for this gene.
Synonyms:	HPRP4; HPRP4P; PRP4; Prp4p
Protein Pathways:	Spliceosome



[View online »](#)

Product images:



Host: Rabbit
Target Name: PRPF4
Sample Type: HepG2 Cell Lysate
Antibody Dilution: 1.0 μ g/ml

Host: Rabbit
Target Name: PRPF4
Sample Tissue: Human HepG2 Whole Cell lysates
Antibody Dilution: 1 μ g/ml