

Product datasheet for **TA359488**

PPT2 Rabbit Polyclonal Antibody

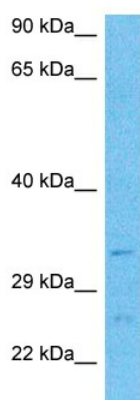
Product data:

Product Type:	Primary Antibodies
Applications:	WB
Reactivity:	Human
Host:	Rabbit
Clonality:	Polyclonal
Immunogen:	The immunogen is a synthetic peptide directed towards the C-terminal region of Human PPT2
Specificity:	Expected reactivity: Human
Formulation:	Liquid. Purified antibody supplied in 1x PBS buffer with 0.09% (w/v) sodium azide and 2% sucrose. <i>Note that this product is shipped as lyophilized powder to China customers.</i>
Concentration:	lot specific
Purification:	Affinity purified
Conjugation:	Unconjugated
Storage:	For short term use, store at 2-8°C up to 1 week. For long term storage, store at -20°C in small aliquots to prevent freeze-thaw cycles.
Stability:	Shelf life: one year from despatch.
Predicted Protein Size:	33kDa
Gene Name:	palmitoyl-protein thioesterase 2
Database Link:	Entrez Gene 9374 Human Q9UMR5
Background:	This gene encodes a member of the palmitoyl-protein thioesterase family. The encoded glycosylated lysosomal protein has palmitoyl-CoA hydrolase activity in vitro, but does not hydrolyze palmitate from cysteine residues in proteins. Alternative splicing results in multiple transcript variants. Read-through transcription also exists between this gene and the downstream EGFL8 (EGF-like-domain, multiple 8) gene.
Synonyms:	C6orf8; DKFZp564P1516; G14; OTTHUMP00000029377; OTTHUMP00000029378; OTTHUMP00000029380; PPT-2; VE-statin2



[View online »](#)

Product images:



Host: Rabbit
Target Name: PPT2
Sample Tissue: Fetal Liver Lysate
Antibody Dilution: 1.0 μ g/ml

Host: Rabbit
Target Name: PPT2
Sample Type: Fetal Liver lysates
Antibody Dilution: 1.0ug/ml