

Product datasheet for **TA359484**

PITX3 Rabbit Polyclonal Antibody

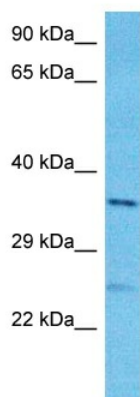
Product data:

Product Type:	Primary Antibodies
Applications:	WB
Reactivity:	Human
Host:	Rabbit
Clonality:	Polyclonal
Immunogen:	The immunogen is a synthetic peptide directed towards the N-terminal region of Human PITX3
Specificity:	Expected reactivity: Human
Formulation:	Liquid. Purified antibody supplied in 1x PBS buffer with 0.09% (w/v) sodium azide and 2% sucrose. <i>Note that this product is shipped as lyophilized powder to China customers.</i>
Concentration:	lot specific
Purification:	Affinity purified
Conjugation:	Unconjugated
Storage:	For short term use, store at 2-8°C up to 1 week. For long term storage, store at -20°C in small aliquots to prevent freeze-thaw cycles.
Stability:	Shelf life: one year from despatch.
Predicted Protein Size:	33kDa
Gene Name:	paired like homeodomain 3
Database Link:	NP_005020 Entrez Gene 5309 Human O75364
Background:	This gene encodes a member of the RIEG/PITX homeobox family, which is in the bicoid class of homeodomain proteins. Members of this family act as transcription factors. This protein is involved in lens formation during eye development. Mutations of this gene have been associated with anterior segment mesenchymal dysgenesis and congenital cataracts.
Synonyms:	CTPP4; MGC12766; PTX3



[View online »](#)

Product images:



Host: Rabbit
Target Name: PITX3
Sample Tissue: NCI-H226 Cell Lysate
Antibody Dilution: 1.0µg/ml

Host: Rabbit
Target Name: PITX3
Sample Type: NCI-H226 Whole Cell lysates
Antibody Dilution: 1.0ug/ml