

Product datasheet for **TA359471**

NDUFA10 Rabbit Polyclonal Antibody

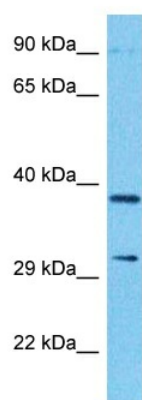
Product data:

Product Type:	Primary Antibodies
Applications:	WB
Reactivity:	Human
Host:	Rabbit
Clonality:	Polyclonal
Immunogen:	The immunogen is a synthetic peptide directed towards the N-terminal region of Human NDUA A
Specificity:	Expected reactivity: Human
Formulation:	Liquid. Purified antibody supplied in 1x PBS buffer with 0.09% (w/v) sodium azide and 2% sucrose. <i>Note that this product is shipped as lyophilized powder to China customers.</i>
Concentration:	lot specific
Purification:	Affinity Purified
Conjugation:	Unconjugated
Storage:	For short term use, store at 2-8°C up to 1 week. For long term storage, store at -20°C in small aliquots to prevent freeze-thaw cycles.
Stability:	Shelf life: one year from despatch.
Predicted Protein Size:	39kDa
Gene Name:	NADH:ubiquinone oxidoreductase subunit A10
Database Link:	NP_004535 Entrez Gene 4705 Human O95299
Background:	The protein encoded by this gene is a component of 42 kDa complex I, the first enzyme complex in the electron transport chain of mitochondria. This protein has NADH dehydrogenase activity and oxidoreductase activity. It transfers electrons from NADH to the respiratory chain. A mutation in this gene was found in an individual with Leigh syndrome.
Synonyms:	CI-42KD; FLJ21923; MGC5103



[View online »](#)

Product images:



Host: Rabbit
Target Name: NDUAA
Sample Tissue: 721_B Cell Lysate
Antibody Dilution: 1.0µg/ml

Host: Rabbit
Target Name: NDUAA
Sample Type: 721_B Whole Cell lysates
Antibody Dilution: 1.0ug/ml