

Product datasheet for **TA359467**

MYO5A Rabbit Polyclonal Antibody

Product data:

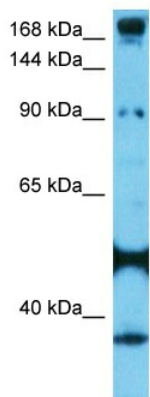
Product Type:	Primary Antibodies
Applications:	WB
Reactivity:	Human
Host:	Rabbit
Clonality:	Polyclonal
Immunogen:	The immunogen is a synthetic peptide directed towards the Middle region of Human MYO5A
Specificity:	Expected reactivity: Human
Formulation:	Liquid. Purified antibody supplied in 1x PBS buffer with 0.09% (w/v) sodium azide and 2% sucrose. <i>Note that this product is shipped as lyophilized powder to China customers.</i>
Concentration:	lot specific
Purification:	Affinity purified
Conjugation:	Unconjugated
Storage:	For short term use, store at 2-8°C up to 1 week. For long term storage, store at -20°C in small aliquots to prevent freeze-thaw cycles.
Stability:	Shelf life: one year from despatch.
Predicted Protein Size:	201 kDa
Gene Name:	myosin VA
Database Link:	Entrez Gene 4644 Human Q9Y4I1-2
Background:	This gene is one of three myosin V heavy-chain genes, belonging to the myosin gene superfamily. Myosin V is a class of actin-based motor proteins involved in cytoplasmic vesicle transport and anchorage, spindle-pole alignment and mRNA translocation. The protein encoded by this gene is abundant in melanocytes and nerve cells. Mutations in this gene cause Griscelli syndrome type-1 (GS1), Griscelli syndrome type-3 (GS3) and neuroectodermal melanolyosomal disease, or Elejalde disease. Multiple alternatively spliced transcript variants encoding different isoforms have been reported, but the full-length nature of some variants has not been determined.



[View online »](#)

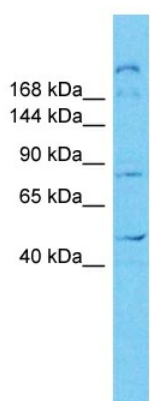
Synonyms: dilute; GS1; MYH12; MYO5; Myosin-12; Myoxin; MYR12

Product images:



Host: Rabbit
 Target Name: MYO5A
 Sample Tissue: 721_B Cell Lysate
 Antibody Dilution: 2.0µg/ml

Host: Rabbit
 Target Name: MYO5A
 Sample Type: 721_B Whole Cell
 Antibody Dilution: 1.0ug/ml



Host: Rabbit
 Target Name: MYO5A
 Sample Type: PANC1 Cell Lysate
 Antibody Dilution: 1.0µg/ml

Host: Rabbit
 Target Name: MYO5A
 Sample Tissue: Human PANC1 Whole Cell
 Antibody Dilution: 1ug/ml