

## Product datasheet for **TA359463**

### MARK1 Rabbit Polyclonal Antibody

#### Product data:

Product Type:	Primary Antibodies
Applications:	WB
Reactivity:	Human
Host:	Rabbit
Clonality:	Polyclonal
Immunogen:	The immunogen is a synthetic peptide directed towards the C-terminal region of Human MARK1
Specificity:	<b>Expected reactivity:</b> Human
Formulation:	Liquid. Purified antibody supplied in 1x PBS buffer with 0.09% (w/v) sodium azide and 2% sucrose. <i>Note that this product is shipped as lyophilized powder to China customers.</i>
Concentration:	lot specific
Purification:	Affinity purified
Conjugation:	Unconjugated
Storage:	For short term use, store at 2-8°C up to 1 week. For long term storage, store at -20°C in small aliquots to prevent freeze-thaw cycles.
Stability:	Shelf life: one year from despatch.
Predicted Protein Size:	70 kDa
Gene Name:	microtubule affinity regulating kinase 1
Database Link:	<a href="#">Entrez Gene 4139 Human</a> <a href="#">Q9P0L2-2</a>



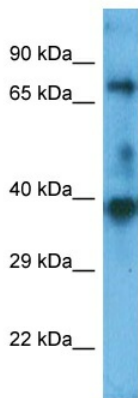
[View online »](#)

**Background:**

MARK1 is a serine/threonine-protein kinase which is involved in cell polarity and microtubule dynamics regulation. Phosphorylates DCX, MAP2, MAP4 and MAPT/TAU. Involved in cell polarity by phosphorylating the microtubule-associated proteins MAP2, MAP4 and MAPT/TAU at KXGS motifs, causing detachment from microtubules, and their disassembly. It is involved in the regulation of neuronal migration through its dual activities in regulating cellular polarity and microtubule dynamics, possibly by phosphorylating and regulating DCX. Also it acts as a positive regulator of the Wnt signaling pathway, probably by mediating phosphorylation of dishevelled proteins (DVL1, DVL2 and/or DVL3).

**Synonyms:**

KIAA1477; MARK; MGC126512; MGC126513

**Product images:**

Host: Rabbit  
Target Name: MARK1  
Sample Tissue: OVCAR-3 Cell Lysate  
Antibody Dilution: 1.0µg/ml

Host: Rabbit  
Target Name: MARK1  
Sample Type: OVCAR-3 Whole Cell  
Antibody Dilution: 1.0ug/ml