

Product datasheet for **TA359455**

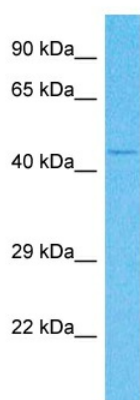
LDB1 Rabbit Polyclonal Antibody

Product data:

Product Type:	Primary Antibodies
Applications:	WB
Reactivity:	Human
Host:	Rabbit
Clonality:	Polyclonal
Immunogen:	The immunogen is a synthetic peptide directed towards the C-terminal region of Human LDB1
Specificity:	Expected reactivity: Human
Formulation:	Liquid. Purified antibody supplied in 1x PBS buffer with 0.09% (w/v) sodium azide and 2% sucrose. <i>Note that this product is shipped as lyophilized powder to China customers.</i>
Concentration:	lot specific
Purification:	Affinity Purified
Conjugation:	Unconjugated
Storage:	For short term use, store at 2-8°C up to 1 week. For long term storage, store at -20°C in small aliquots to prevent freeze-thaw cycles.
Stability:	Shelf life: one year from despatch.
Predicted Protein Size:	45kDa
Gene Name:	LIM domain binding 1
Database Link:	Entrez Gene 8861 Human Q86U70
Background:	LDB1 binds to the LIM domain of a wide variety of LIM domain- containing transcription factors. It may regulate the transcriptional activity of LIM-containing proteins by determining specific partner interactions. It plays a role in the development of interneurons and motor neurons in cooperation with LHX3 and ISL1. It acts synergistically with LHX1/LIM1 in axis formation and activation of gene expression. It acts with LMO2 in the regulation of red blood cell development, maintaining erythroid precursors in an immature state.
Synonyms:	CLIM-2; CLIM2; hLdb1; NLI



[View online »](#)

Product images:

Host: Rabbit
Target Name: LDB1
Sample Tissue: Fetal Kidney Lysate
Antibody Dilution: 1.0 μ g/ml

Host: Rabbit
Target Name: LDB1
Sample Type: Fetal Kidney lysates
Antibody Dilution: 1.0ug/ml