

Product datasheet for **TA359445**

HTRA2 Rabbit Polyclonal Antibody

Product data:

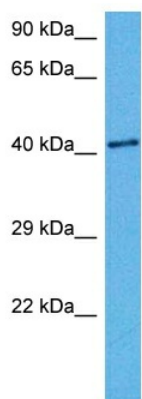
Product Type:	Primary Antibodies
Applications:	WB
Reactivity:	Human
Host:	Rabbit
Clonality:	Polyclonal
Immunogen:	The immunogen is a synthetic peptide directed towards the middle region of human HTRA2
Specificity:	Expected reactivity: Human
Formulation:	Liquid. Purified antibody supplied in 1x PBS buffer with 0.09% (w/v) sodium azide and 2% sucrose. <i>Note that this product is shipped as lyophilized powder to China customers.</i>
Concentration:	lot specific
Purification:	Affinity purified
Conjugation:	Unconjugated
Storage:	For short term use, store at 2-8°C up to 1 week. For long term storage, store at -20°C in small aliquots to prevent freeze-thaw cycles.
Stability:	Shelf life: one year from despatch.
Predicted Protein Size:	41 kDa
Gene Name:	HtrA serine peptidase 2
Database Link:	Entrez Gene 27429 Human O43464-4
Background:	This gene encodes a serine protease. The protein has been localized in the endoplasmic reticulum and interacts with an alternatively spliced form of mitogen-activated protein kinase 14. The protein has also been localized to the mitochondria with release to the cytosol following apoptotic stimulus. The protein is thought to induce apoptosis by binding the apoptosis inhibitory protein baculoviral IAP repeat-containing 4. Nuclear localization of this protein has also been observed. Alternate splicing of this gene results in two transcript variants encoding different isoforms. Additional transcript variants have been described, but their full-length sequences have not been determined.



[View online »](#)

Synonyms: OMI; PARK13; PRSS25

Product images:



Host: Rabbit
Target Name: HTRA2
Sample Type: DLD1 Cell Lysate
Antibody Dilution: 1.0 μ g/ml

Host: Rabbit
Target Name: HTRA2
Sample Tissue: Human DLD1 Whole Cell lysates
Antibody Dilution: 1 μ g/ml