

## Product datasheet for **TA359444**

### IFIT1 Rabbit Polyclonal Antibody

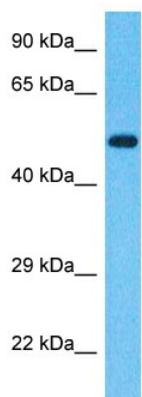
#### Product data:

Product Type:	Primary Antibodies
Applications:	WB
Reactivity:	Human
Host:	Rabbit
Clonality:	Polyclonal
Immunogen:	The immunogen is a synthetic peptide directed towards the C-terminal region of Human IFIT1
Specificity:	<b>Expected reactivity:</b> Human
Formulation:	Liquid. Purified antibody supplied in 1x PBS buffer with 0.09% (w/v) sodium azide and 2% sucrose. <i>Note that this product is shipped as lyophilized powder to China customers.</i>
Concentration:	lot specific
Purification:	Affinity Purified
Conjugation:	Unconjugated
Storage:	For short term use, store at 2-8°C up to 1 week. For long term storage, store at -20°C in small aliquots to prevent freeze-thaw cycles.
Stability:	Shelf life: one year from despatch.
Predicted Protein Size:	52kDa
Gene Name:	interferon induced protein with tetratricopeptide repeats 1
Database Link:	<a href="#">NP_001539</a> <a href="#">Entrez Gene 3434 Human</a> <a href="#">P09914</a>
Background:	This gene encodes a protein containing tetratricopeptide repeats that was originally identified as induced upon treatment with interferon. The encoded protein may inhibit viral replication and translational initiation. This gene is located in a cluster on chromosome 10 with five other closely related genes. There is a pseudogene for this gene on chromosome 13. Alternatively spliced transcript variants encoding multiple isoforms have been observed.
Synonyms:	G10P1; GARG-16; IFI-56; IFI-56K; IFI56; IFIT-1; IFNAI1; ISG56; RNM561



[View online »](#)

Product images:



Host: Rabbit  
Target Name: IFIT1  
Sample Tissue: Fetal Kidney Lysate  
Antibody Dilution: 1.0µg/ml

Host: Rabbit  
Target Name: IFIT1  
Sample Type: Fetal Kidney lysates  
Antibody Dilution: 1.0ug/ml