

Product datasheet for **TA359438**

GIGYF2 Rabbit Polyclonal Antibody

Product data:

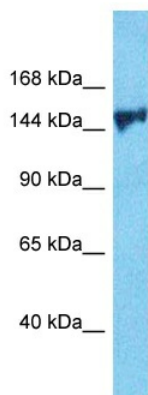
Product Type:	Primary Antibodies
Applications:	WB
Reactivity:	Human
Host:	Rabbit
Clonality:	Polyclonal
Immunogen:	The immunogen is a synthetic peptide directed towards the N-terminal region of Human PERQ2
Specificity:	Expected reactivity: Human
Formulation:	Liquid. Purified antibody supplied in 1x PBS buffer with 0.09% (w/v) sodium azide and 2% sucrose.
Concentration:	lot specific
Purification:	Affinity purified
Conjugation:	Unconjugated
Storage:	For short term use, store at 2-8°C up to 1 week. For long term storage, store at -20°C in small aliquots to prevent freeze-thaw cycles.
Stability:	Shelf life: one year from despatch.
Predicted Protein Size:	142kDa
Gene Name:	GRB10 interacting GYF protein 2
Database Link:	NP_056390 Entrez Gene 26058 Human Q6Y7W6
Background:	This gene contains CAG trinucleotide repeats and encodes a protein containing several stretches of polyglutamine residues. The encoded protein may be involved in the regulation of tyrosine kinase receptor signaling. This gene is located in a chromosomal region that was genetically linked to Parkinson disease type 11, and mutations in this gene were thought to be causative for this disease. However, more recent studies in different populations have been unable to replicate this association. Alternative splicing results in multiple transcript variants.



[View online »](#)

Synonyms:

DKFZp686I15154; DKFZp686J17223; FLJ23368; GYF2; KIAA0642; OTTHUMP00000203484; PARK11; PERQ2; PERQ3; TNRC15

Product images:


Host: Rabbit

Target Name: PERQ2

Sample Tissue: 293T Cell Lysate

Antibody Dilution: 1.0 µg/ml

Host: Rabbit

Target Name: PERQ2

Sample Type: 293T Whole Cell lysates

Antibody Dilution: 1.0ug/ml