

Product datasheet for **TA359434**

GIT1 Rabbit Polyclonal Antibody

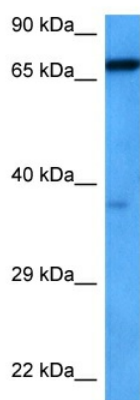
Product data:

Product Type:	Primary Antibodies
Applications:	WB
Reactivity:	Human
Host:	Rabbit
Clonality:	Polyclonal
Immunogen:	The immunogen is a synthetic peptide directed towards the middle region of human GIT1
Specificity:	Expected reactivity: Human
Formulation:	Liquid. Purified antibody supplied in 1x PBS buffer with 0.09% (w/v) sodium azide and 2% sucrose. <i>Note that this product is shipped as lyophilized powder to China customers.</i>
Concentration:	lot specific
Purification:	Affinity purified
Conjugation:	Unconjugated
Storage:	For short term use, store at 2-8°C up to 1 week. For long term storage, store at -20°C in small aliquots to prevent freeze-thaw cycles.
Stability:	Shelf life: one year from despatch.
Predicted Protein Size:	84 kDa
Gene Name:	GIT ArfGAP 1
Database Link:	NP_001078923.1 Entrez Gene 28964 Human Q9Y2X7
Synonyms:	CAT-1; CAT1
Protein Families:	Druggable Genome
Protein Pathways:	Endocytosis, Epithelial cell signaling in Helicobacter pylori infection, Regulation of actin cytoskeleton



[View online »](#)

Product images:



Host: Rabbit
Target Name: GIT1
Sample Type: 786-0 Cell Lysate
Antibody Dilution: 1.0 μ g/ml

Host: Rabbit
Target Name: GIT1
Sample Tissue: 786-0 Whole Cell lysates
Antibody Dilution: 1 μ g/ml