

Product datasheet for **TA359433**

EPB41L3 Rabbit Polyclonal Antibody

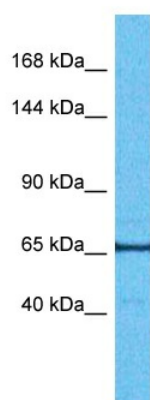
Product data:

Product Type:	Primary Antibodies
Applications:	WB
Reactivity:	Human
Host:	Rabbit
Clonality:	Polyclonal
Immunogen:	The immunogen is a synthetic peptide directed towards the N-terminal region of Human E41L3
Specificity:	Expected reactivity: Human
Formulation:	Liquid. Purified antibody supplied in 1x PBS buffer with 0.09% (w/v) sodium azide and 2% sucrose. <i>Note that this product is shipped as lyophilized powder to China customers.</i>
Concentration:	lot specific
Purification:	Affinity Purified
Conjugation:	Unconjugated
Storage:	For short term use, store at 2-8°C up to 1 week. For long term storage, store at -20°C in small aliquots to prevent freeze-thaw cycles.
Stability:	Shelf life: one year from despatch.
Predicted Protein Size:	67kDa
Gene Name:	erythrocyte membrane protein band 4.1 like 3
Database Link:	Entrez Gene 23136 Human Q9Y2J2-3
Synonyms:	4.1B; DAL-1; DAL1; FLJ37633; KIAA0987



[View online »](#)

Product images:



Host: Rabbit
Target Name: E41L3
Sample Tissue: Fetal Lung Lysate
Antibody Dilution: 1.0 μ g/ml

Host: Rabbit
Target Name: E41L3
Sample Type: Fetal Lung lysates
Antibody Dilution: 1.0 μ g/ml