

## Product datasheet for **TA359428**

### CHSY1 Rabbit Polyclonal Antibody

#### Product data:

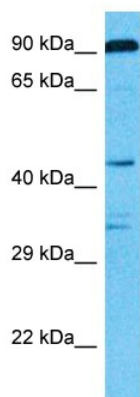
Product Type:	Primary Antibodies
Applications:	WB
Reactivity:	Human
Host:	Rabbit
Clonality:	Polyclonal
Immunogen:	The immunogen is a synthetic peptide directed towards the C-terminal region of Human CHSS1
Specificity:	<b>Expected reactivity:</b> Human
Formulation:	Liquid. Purified antibody supplied in 1x PBS buffer with 0.09% (w/v) sodium azide and 2% sucrose. <i>Note that this product is shipped as lyophilized powder to China customers.</i>
Concentration:	lot specific
Purification:	Affinity Purified
Conjugation:	Unconjugated
Storage:	For short term use, store at 2-8°C up to 1 week. For long term storage, store at -20°C in small aliquots to prevent freeze-thaw cycles.
Stability:	Shelf life: one year from despatch.
Predicted Protein Size:	88kDa
Gene Name:	chondroitin sulfate synthase 1
Database Link:	<a href="#">NP_055733</a> <a href="#">Entrez Gene 22856 Human</a> <a href="#">Q86X52</a>
Background:	This gene encodes a member of the chondroitin N-acetylgalactosaminyltransferase family. These enzymes possess dual glucuronyltransferase and galactosaminyltransferase activity and play critical roles in the biosynthesis of chondroitin sulfate, a glycosaminoglycan involved in many biological processes including cell proliferation and morphogenesis. Decreased expression of this gene may play a role in colorectal cancer, and mutations in this gene are a cause of temtamy preaxial brachydactyly syndrome.



[View online »](#)

Synonyms: CHSY; ChSy-1; CSS1; DKFZp434M032; FLJ58581; KIAA0990

### Product images:



Host: Rabbit  
Target Name: CHSS1  
Sample Tissue: 786-0 Cell Lysate  
Antibody Dilution: 1.0 $\mu$ g/ml

Host: Rabbit  
Target Name: CHSS1  
Sample Type: 786-0 Whole Cell lysates  
Antibody Dilution: 1.0 $\mu$ g/ml