

Product datasheet for **TA359427**

CNGB3 Rabbit Polyclonal Antibody

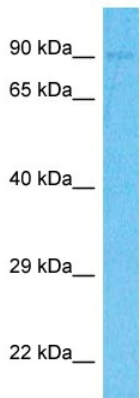
Product data:

Product Type:	Primary Antibodies
Applications:	WB
Reactivity:	Human
Host:	Rabbit
Clonality:	Polyclonal
Immunogen:	The immunogen is a synthetic peptide directed towards the N-terminal region of Human CNGB3
Specificity:	Expected reactivity: Human
Formulation:	Liquid. Purified antibody supplied in 1x PBS buffer with 0.09% (w/v) sodium azide and 2% sucrose. <i>Note that this product is shipped as lyophilized powder to China customers.</i>
Concentration:	lot specific
Purification:	Affinity Purified
Conjugation:	Unconjugated
Storage:	For short term use, store at 2-8°C up to 1 week. For long term storage, store at -20°C in small aliquots to prevent freeze-thaw cycles.
Stability:	Shelf life: one year from despatch.
Predicted Protein Size:	88kDa
Gene Name:	cyclic nucleotide gated channel beta 3
Database Link:	NP_061971 Entrez Gene 54714 Human Q9NQW8
Background:	This gene encodes the beta subunit of a cyclic nucleotide-gated ion channel. The encoded beta subunit appears to play a role in modulation of channel function in cone photoreceptors. This heterotetrameric channel is necessary for sensory transduction, and mutations in this gene have been associated with achromatopsia 3, progressive cone dystrophy, and juvenile macular degeneration, also known as Stargardt Disease.
Synonyms:	ACHM1; ACHM3; RMCH; RMCH1



[View online »](#)

Product images:



Host: Rabbit
Target Name: CNGB3
Sample Tissue: MCF7 Cell Lysate
Antibody Dilution: 1.0µg/ml

Host: Rabbit
Target Name: CNGB3
Sample Type: MCF7 Whole Cell lysates
Antibody Dilution: 1.0ug/ml