

Product datasheet for **TA359424**

CAF1 (CHAF1A) Rabbit Polyclonal Antibody

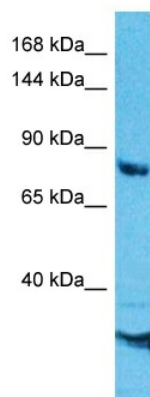
Product data:

Product Type:	Primary Antibodies
Applications:	WB
Reactivity:	Human
Host:	Rabbit
Clonality:	Polyclonal
Immunogen:	The immunogen is a synthetic peptide directed towards the C-terminal region of Human CAF1A
Specificity:	Expected reactivity: Human
Formulation:	Liquid. Purified antibody supplied in 1x PBS buffer with 0.09% (w/v) sodium azide and 2% sucrose. <i>Note that this product is shipped as lyophilized powder to China customers.</i>
Concentration:	lot specific
Purification:	Affinity Purified
Conjugation:	Unconjugated
Storage:	For short term use, store at 2-8°C up to 1 week. For long term storage, store at -20°C in small aliquots to prevent freeze-thaw cycles.
Stability:	Shelf life: one year from despatch.
Predicted Protein Size:	96kDa
Gene Name:	chromatin assembly factor 1 subunit A
Database Link:	Entrez Gene 10036 Human Q13111-3
Background:	Chromatin assembly factor I (CAF1) is a nuclear complex consisting of p50, p60 (CHAF1B; MIM 601245), and p150 (CHAF1A) subunits that assembles histone octamers onto replicating DNA in vitro (Kaufman et al., 1995 [PubMed 7600578]).[supplied by OMIM, Mar 2008]
Synonyms:	CAF; CAF-1; CAF-Ip150; CAF1; CAF1B; CAF1P150; hp150; MGC71229; P150



[View online »](#)

Product images:



Host: Rabbit
Target Name: CAF1A
Sample Tissue: HepG2 Cell Lysate
Antibody Dilution: 1.0 μ g/ml

Host: Rabbit
Target Name: CAF1A
Sample Type: HepG2 Whole Cell lysates
Antibody Dilution: 1.0ug/ml