

Product datasheet for **TA359420**

ARL4C Rabbit Polyclonal Antibody

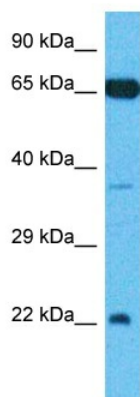
Product data:

Product Type:	Primary Antibodies
Applications:	WB
Reactivity:	Human
Host:	Rabbit
Clonality:	Polyclonal
Immunogen:	The immunogen is a synthetic peptide directed towards the N-terminal region of Human ARL4C
Specificity:	Expected reactivity: Human
Formulation:	Liquid. Purified antibody supplied in 1x PBS buffer with 0.09% (w/v) sodium azide and 2% sucrose.
Concentration:	lot specific
Purification:	Affinity Purified
Conjugation:	Unconjugated
Storage:	For short term use, store at 2-8°C up to 1 week. For long term storage, store at -20°C in small aliquots to prevent freeze-thaw cycles.
Stability:	Shelf life: one year from despatch.
Predicted Protein Size:	21kDa
Gene Name:	ADP ribosylation factor like GTPase 4C
Database Link:	NP_005728 Entrez Gene 10123 Human P56559
Background:	ADP-ribosylation factor-like 4C is a member of the ADP-ribosylation factor family of GTP-binding proteins. ARL4C is closely similar to ARL4A and ARL4D and each has a nuclear localization signal and an unusually high guanine nucleotide exchange rate. This protein may play a role in cholesterol transport.
Synonyms:	ARL7; LAK



[View online »](#)

Product images:



Host: Rabbit
Target Name: ARL4C
Sample Tissue: Fetal Kidney Lysate
Antibody Dilution: 1.0µg/ml

Host: Rabbit
Target Name: ARL4C
Sample Type: Fetal Kidney lysates
Antibody Dilution: 1.0ug/ml