

Product datasheet for **TA359412**

IL1RAPL1 Rabbit Polyclonal Antibody

Product data:

Product Type:	Primary Antibodies
Applications:	WB
Reactivity:	Human
Host:	Rabbit
Clonality:	Polyclonal
Immunogen:	The immunogen is a synthetic peptide directed towards the C-terminal region of Human IRPL1
Specificity:	Expected reactivity: Human
Formulation:	Liquid. Purified antibody supplied in 1x PBS buffer with 0.09% (w/v) sodium azide and 2% sucrose.
Concentration:	lot specific
Purification:	Affinity purified
Conjugation:	Unconjugated
Storage:	For short term use, store at 2-8°C up to 1 week. For long term storage, store at -20°C in small aliquots to prevent freeze-thaw cycles.
Stability:	Shelf life: one year from despatch.
Predicted Protein Size:	76kDa
Gene Name:	interleukin 1 receptor accessory protein like 1
Database Link:	XP_005274498 Entrez Gene 11141 Human Q9NZN1



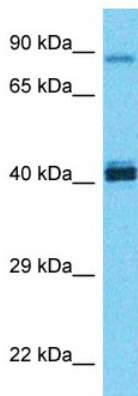
[View online »](#)

Background:

The protein encoded by this gene is a member of the interleukin 1 receptor family and is similar to the interleukin 1 accessory proteins. This protein has an N-terminal signal peptide, three extracellular immunoglobulin Ig-like domains, a transmembrane domain, an intracellular Toll/IL-1R domain, and a long C-terminal tail which interacts with multiple signalling molecules. This gene is located at a region on chromosome X that is associated with a non-syndromic form of X-linked intellectual disability. Deletions and mutations in this gene were found in patients with intellectual disability. This gene is expressed at a high level in post-natal brain structures involved in the hippocampal memory system, which suggests a specialized role in the physiological processes underlying memory and learning abilities, and plays a role in synapse formation and stabilization.

Synonyms:

IL1R8; IL1RAPL; IL1RAPL-1; MRX10; MRX21; MRX34; oligophrenin-4; OPHN4; OTTHUMP00000023097; TIGIRR-2

Product images:


Host: Rabbit
 Target Name: IRPL1
 Sample Tissue: Fetal Kidney Lysate
 Antibody Dilution: 1.0µg/ml

Host: Rabbit
 Target Name: IRPL1
 Sample Type: Fetal Kidney lysates
 Antibody Dilution: 1.0ug/ml