

Product datasheet for **TA359403**

GAS1 Rabbit Polyclonal Antibody

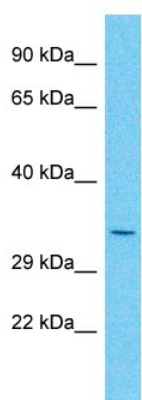
Product data:

Product Type:	Primary Antibodies
Applications:	WB
Reactivity:	Human
Host:	Rabbit
Clonality:	Polyclonal
Immunogen:	The immunogen is a synthetic peptide directed towards the C-terminal region of Human GAS1
Specificity:	Expected reactivity: Human
Formulation:	Liquid. Purified antibody supplied in 1x PBS buffer with 0.09% (w/v) sodium azide and 2% sucrose. <i>Note that this product is shipped as lyophilized powder to China customers.</i>
Concentration:	lot specific
Purification:	Affinity Purified
Conjugation:	Unconjugated
Storage:	For short term use, store at 2-8°C up to 1 week. For long term storage, store at -20°C in small aliquots to prevent freeze-thaw cycles.
Stability:	Shelf life: one year from despatch.
Predicted Protein Size:	37kDa
Gene Name:	growth arrest specific 1
Database Link:	NP_002039 Entrez Gene 2619 Human P54826
Background:	Growth arrest-specific 1 plays a role in growth suppression. GAS1 blocks entry to S phase and prevents cycling of normal and transformed cells. Gas1 is a putative tumor suppressor gene.
Synonyms:	GAS-1



[View online »](#)

Product images:



Host: Rabbit
Target Name: GAS1
Sample Tissue: Hela Cell Lysate
Antibody Dilution: 1.0 μ g/ml

Host: Rabbit
Target Name: GAS1
Sample Type: Hela Whole Cell lysates
Antibody Dilution: 1.0ug/ml