

## Product datasheet for **TA359401**

### EXT2 Rabbit Polyclonal Antibody

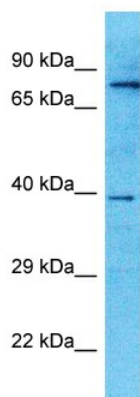
#### Product data:

Product Type:	Primary Antibodies
Applications:	WB
Reactivity:	Human
Host:	Rabbit
Clonality:	Polyclonal
Immunogen:	The immunogen is a synthetic peptide directed towards the C-terminal region of Human EXT2
Specificity:	<b>Expected reactivity:</b> Human
Formulation:	Liquid. Purified antibody supplied in 1x PBS buffer with 0.09% (w/v) sodium azide and 2% sucrose. <i>Note that this product is shipped as lyophilized powder to China customers.</i>
Concentration:	lot specific
Purification:	Affinity Purified
Conjugation:	Unconjugated
Storage:	For short term use, store at 2-8°C up to 1 week. For long term storage, store at -20°C in small aliquots to prevent freeze-thaw cycles.
Stability:	Shelf life: one year from despatch.
Predicted Protein Size:	78kDa
Gene Name:	exostosin glycosyltransferase 2
Database Link:	<a href="#">NP_997005</a> <a href="#">Entrez Gene 2132 Human</a> <a href="#">Q93063</a>
Background:	This gene encodes one of two glycosyltransferases involved in the chain elongation step of heparan sulfate biosynthesis. Mutations in this gene cause the type II form of multiple exostoses. Alternatively spliced transcript variants encoding different isoforms have been noted for this gene.
Synonyms:	Glucuronosyl-N-acetylglucosaminyl-proteoglycan/N-a; SOTV



[View online »](#)

Product images:



Host: Rabbit  
Target Name: EXT2  
Sample Tissue: Placenta Lysate  
Antibody Dilution: 1.0 $\mu$ g/ml

Host: Rabbit  
Target Name: EXT2  
Sample Type: Placenta lysates  
Antibody Dilution: 1.0ug/ml