

Product datasheet for **TA359400**

Fez1 Rabbit Polyclonal Antibody

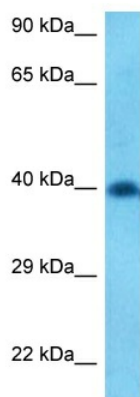
Product data:

Product Type:	Primary Antibodies
Applications:	WB
Reactivity:	Mouse
Host:	Rabbit
Clonality:	Polyclonal
Immunogen:	The immunogen is a synthetic peptide directed towards the N-terminal region of Mouse FEZ1
Specificity:	Expected reactivity: Mouse
Formulation:	Liquid. Purified antibody supplied in 1x PBS buffer with 0.09% (w/v) sodium azide and 2% sucrose. <i>Note that this product is shipped as lyophilized powder to China customers.</i>
Concentration:	lot specific
Purification:	Affinity purified
Conjugation:	Unconjugated
Storage:	For short term use, store at 2-8°C up to 1 week. For long term storage, store at -20°C in small aliquots to prevent freeze-thaw cycles.
Stability:	Shelf life: one year from despatch.
Predicted Protein Size:	43 kDa
Gene Name:	fasciculation and elongation protein zeta 1 (zygin I)
Database Link:	XP_006510292.1 Entrez Gene 235180 Mouse Q8K0X8
Background:	FEZ1 may be involved in axonal outgrowth as component of the network of molecules that regulate cellular morphology and axon guidance machinery. It may participate in the transport of mitochondria and other cargos along microtubules.
Synonyms:	Zygin-1



[View online »](#)

Product images:



Host: Rabbit
Target Name: FEZ1
Sample Tissue: Mouse Liver Lysate
Antibody Dilution: 2.0 μ g/ml

Host: Rabbit
Target Name: FEZ1
Sample Type: Mouse Liver
Antibody Dilution: 1.0 μ g/ml