

Product datasheet for **TA359393**

DERL1 Rabbit Polyclonal Antibody

Product data:

Product Type:	Primary Antibodies
Applications:	WB
Reactivity:	Human
Host:	Rabbit
Clonality:	Polyclonal
Immunogen:	The immunogen is a synthetic peptide directed towards the C-terminal region of Human DERL1
Specificity:	Expected reactivity: Human
Formulation:	Liquid. Purified antibody supplied in 1x PBS buffer with 0.09% (w/v) sodium azide and 2% sucrose. <i>Note that this product is shipped as lyophilized powder to China customers.</i>
Concentration:	lot specific
Purification:	Affinity Purified
Conjugation:	Unconjugated
Storage:	For short term use, store at 2-8°C up to 1 week. For long term storage, store at -20°C in small aliquots to prevent freeze-thaw cycles.
Stability:	Shelf life: one year from despatch.
Predicted Protein Size:	27kDa
Gene Name:	derlin 1
Database Link:	NP_077271 Entrez Gene 79139 Human Q9BUN8



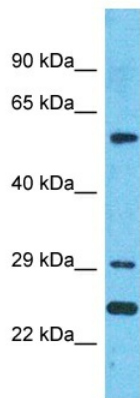
[View online »](#)

Background:

The protein encoded by this gene is a member of the derlin family. Members of this family participate in the ER-associated degradation response and retrotranslocate misfolded or unfolded proteins from the ER lumen to the cytosol for proteasomal degradation. This protein recognizes substrate in the ER and works in a complex to retrotranslocate it across the ER membrane into the cytosol. This protein may select cystic fibrosis transmembrane conductance regulator protein (CFTR) for degradation as well as unfolded proteins in Alzheimer's disease. Alternative splicing results in multiple transcript variants that encode different protein isoforms.

Synonyms:

DER-1; DER1; derlin-1; DERtrin-1; FLJ13784; FLJ42092; MGC3067; PRO2577

Product images:

Host: Rabbit
Target Name: DERL1
Sample Tissue: MCF7 Cell Lysate
Antibody Dilution: 1.0µg/ml

Host: Rabbit
Target Name: DERL1
Sample Type: MCF7 Whole Cell lysates
Antibody Dilution: 1.0ug/ml