

## Product datasheet for TA359382

### CIRBP Rabbit Polyclonal Antibody

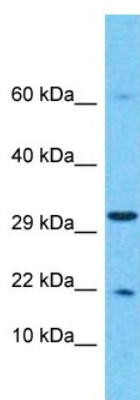
#### Product data:

Product Type:	Primary Antibodies
Applications:	WB
Reactivity:	Human
Host:	Rabbit
Clonality:	Polyclonal
Immunogen:	The immunogen is a synthetic peptide directed towards the middle region of Human CIRBP
Specificity:	<b>Expected reactivity:</b> Human
Formulation:	Liquid. Purified antibody supplied in 1x PBS buffer with 0.09% (w/v) sodium azide and 2% sucrose. <i>Note that this product is shipped as lyophilized powder to China customers.</i>
Concentration:	lot specific
Purification:	Affinity Purified
Conjugation:	Unconjugated
Storage:	For short term use, store at 2-8°C up to 1 week. For long term storage, store at -20°C in small aliquots to prevent freeze-thaw cycles.
Stability:	Shelf life: one year from despatch.
Predicted Protein Size:	18kDa
Gene Name:	cold inducible RNA binding protein
Database Link:	<a href="#">NP_001271</a> <a href="#">Entrez Gene 1153 Human</a> <a href="#">Q14011</a>
Background:	CIRBP is a cold-inducible mRNA binding protein that plays a protective role in the genotoxic stress response by stabilizing transcripts of genes involved in cell survival. It acts as a translational activator. Seems to play an essential role in cold- induced suppression of cell proliferation. It binds specifically to the 3'-untranslated regions (3' UTRs) of stress-responsive transcripts RPA2 and TXN. It acts as a translational repressor (By similarity). Promotes assembly of stress granules (SGs), when overexpressed.
Synonyms:	A18HNRNP; CIRP



[View online »](#)

## Product images:



Host: Rabbit  
Target Name: CIRBP  
Sample Tissue: Hela Cell Lysate  
Antibody Dilution: 1.0 $\mu$ g/ml

Host: Rabbit  
Target Name: CIRBP  
Sample Type: Hela Whole Cell lysates  
Antibody Dilution: 1.0 $\mu$ g/ml