

## Product datasheet for **TA359380**

### CDKAL1 Rabbit Polyclonal Antibody

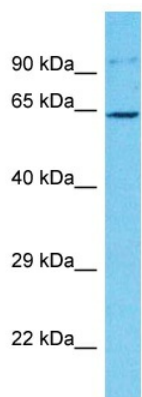
#### Product data:

Product Type:	Primary Antibodies
Applications:	WB
Reactivity:	Human
Host:	Rabbit
Clonality:	Polyclonal
Immunogen:	The immunogen is a synthetic peptide directed towards the N-terminal region of Human CDKAL1
Specificity:	<b>Expected reactivity:</b> Human
Formulation:	Liquid. Purified antibody supplied in 1x PBS buffer with 0.09% (w/v) sodium azide and 2% sucrose. <i>Note that this product is shipped as lyophilized powder to China customers.</i>
Concentration:	lot specific
Purification:	Affinity Purified
Conjugation:	Unconjugated
Storage:	For short term use, store at 2-8°C up to 1 week. For long term storage, store at -20°C in small aliquots to prevent freeze-thaw cycles.
Stability:	Shelf life: one year from despatch.
Predicted Protein Size:	63kDa
Gene Name:	CDK5 regulatory subunit associated protein 1 like 1
Database Link:	<a href="#">Entrez Gene 54901 Human Q5VV42</a>
Background:	The protein encoded by this gene is a member of the methylthiotransferase family. The function of this gene is not known. Genome-wide association studies have linked single nucleotide polymorphisms in an intron of this gene with susceptibility to type 2 diabetes.
Synonyms:	FLJ20342; FLJ46705; MGC75469; OTTHUMP00000016083



[View online »](#)

Product images:



Host: Rabbit  
Target Name: CDKAL1  
Sample Tissue: Jurkat Cell Lysate  
Antibody Dilution: 1.0µg/ml

Host: Rabbit  
Target Name: CDKAL1  
Sample Type: Jurkat Whole Cell lysates  
Antibody Dilution: 1.0ug/ml