

Product datasheet for **TA359377**

CHMP6 Rabbit Polyclonal Antibody

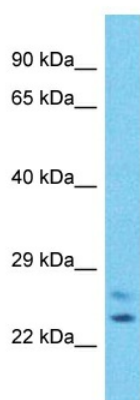
Product data:

Product Type:	Primary Antibodies
Applications:	WB
Reactivity:	Human
Host:	Rabbit
Clonality:	Polyclonal
Immunogen:	The immunogen is a synthetic peptide directed towards the N-terminal region of Human CHMP6
Specificity:	Expected reactivity: Human
Formulation:	Liquid. Purified antibody supplied in 1x PBS buffer with 0.09% (w/v) sodium azide and 2% sucrose. <i>Note that this product is shipped as lyophilized powder to China customers.</i>
Concentration:	lot specific
Purification:	Affinity Purified
Conjugation:	Unconjugated
Storage:	For short term use, store at 2-8°C up to 1 week. For long term storage, store at -20°C in small aliquots to prevent freeze-thaw cycles.
Stability:	Shelf life: one year from despatch.
Predicted Protein Size:	22kDa
Gene Name:	charged multivesicular body protein 6
Database Link:	NP_078867 Entrez Gene 79643 Human Q96FZ7
Background:	This gene encodes a member of the chromatin-modifying protein/charged multivesicular body protein family. Proteins in this family are part of the ESCRT-III (endosomal sorting complex required for transport III) which degrades surface receptors, and in biosynthesis of endosomes.
Synonyms:	FLJ11749; hVps20; VPS20



[View online »](#)

Product images:



Host: Rabbit
Target Name: CHMP6
Sample Tissue: Jurkat Cell Lysate
Antibody Dilution: 1.0 μ g/ml

Host: Rabbit
Target Name: CHMP6
Sample Type: Jurkat Whole Cell lysates
Antibody Dilution: 1.0ug/ml