

## Product datasheet for TA359376

### BICD2 Rabbit Polyclonal Antibody

#### Product data:

Product Type:	Primary Antibodies
Applications:	WB
Reactivity:	Human
Host:	Rabbit
Clonality:	Polyclonal
Immunogen:	The immunogen is a synthetic peptide directed towards the middle region of Human BICD2
Specificity:	<b>Expected reactivity:</b> Human
Formulation:	Liquid. Purified antibody supplied in 1x PBS buffer with 0.09% (w/v) sodium azide and 2% sucrose. <i>Note that this product is shipped as lyophilized powder to China customers.</i>
Concentration:	lot specific
Purification:	Affinity Purified
Conjugation:	Unconjugated
Storage:	For short term use, store at 2-8°C up to 1 week. For long term storage, store at -20°C in small aliquots to prevent freeze-thaw cycles.
Stability:	Shelf life: one year from despatch.
Predicted Protein Size:	90kDa
Gene Name:	BICD cargo adaptor 2
Database Link:	<a href="#">NP_056065</a> <a href="#">Entrez Gene 23299 Human</a> <a href="#">Q8TD16</a>



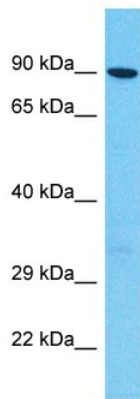
**Background:**

This gene is one of two human homologs of *Drosophila bicaudal-D* and a member of the Bicoid family. It has been implicated in dynein-mediated, minus end-directed motility along microtubules. It has also been reported to be a phosphorylation target of NIMA related kinase 8. Two alternative splice variants have been described.

**Synonyms:**

bA526D8.1; KIAA0699

**Product images:**



Host: Rabbit  
Target Name: BICD2  
Sample Tissue: 721\_B Cell Lysate  
Antibody Dilution: 1.0µg/ml

Host: Rabbit  
Target Name: BICD2  
Sample Type: 721\_B Whole Cell lysates  
Antibody Dilution: 1.0ug/ml