

## Product datasheet for **TA359366**

### Arfrp1 Rabbit Polyclonal Antibody

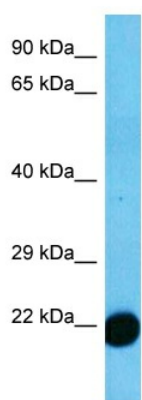
#### Product data:

Product Type:	Primary Antibodies
Applications:	WB
Reactivity:	Rat
Host:	Rabbit
Clonality:	Polyclonal
Immunogen:	The immunogen for Anti-Arfrp1 antibody is: synthetic peptide directed towards the N-terminal of Rat ARFRP
Specificity:	<b>Expected reactivity:</b> Rat
Formulation:	Liquid. Purified antibody supplied in 1x PBS buffer with 0.09% (w/v) sodium azide and 2% sucrose. <i>Note that this product is shipped as lyophilized powder to China customers.</i>
Concentration:	lot specific
Purification:	Affinity purified
Conjugation:	Unconjugated
Storage:	For short term use, store at 2-8°C up to 1 week. For long term storage, store at -20°C in small aliquots to prevent freeze-thaw cycles.
Stability:	Shelf life: one year from despatch.
Predicted Protein Size:	22 kDa
Gene Name:	ADP-ribosylation factor related protein 1
Database Link:	<a href="#">XP_006235780.1</a> <a href="#">Entrez Gene 117051 Rat Q63055</a>
Background:	plasma membrane associated Ras-related GTPase [RGD, Feb 2006]
Synonyms:	ARL18; ARP; Arp1; OTTHUMP00000031584



[View online »](#)

Product images:



Host: Rabbit  
Target Name: ARFRP  
Sample Tissue: Rat Muscle Lysate  
Antibody Dilution: 2.0µg/ml

Host: Rabbit  
Target Name: ARFRP  
Sample Type: Rat Muscle  
Antibody Dilution: 1.0ug/ml