

## Product datasheet for **TA359365**

### AFF4 Rabbit Polyclonal Antibody

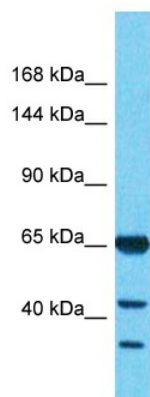
#### Product data:

Product Type:	Primary Antibodies
Applications:	WB
Reactivity:	Human
Host:	Rabbit
Clonality:	Polyclonal
Immunogen:	The immunogen is a synthetic peptide directed towards the middle region of Human AFF4
Specificity:	<b>Expected reactivity:</b> Human
Formulation:	Liquid. Purified antibody supplied in 1x PBS buffer with 0.09% (w/v) sodium azide and 2% sucrose. <i>Note that this product is shipped as lyophilized powder to China customers.</i>
Concentration:	lot specific
Purification:	Affinity Purified
Conjugation:	Unconjugated
Storage:	For short term use, store at 2-8°C up to 1 week. For long term storage, store at -20°C in small aliquots to prevent freeze-thaw cycles.
Stability:	Shelf life: one year from despatch.
Predicted Protein Size:	38kDa
Gene Name:	AF4/FMR2 family member 4
Database Link:	<a href="#">Entrez Gene 27125 Human</a> <a href="#">Q9UHB7-3</a>
Background:	The protein encoded by this gene belongs to the AF4 family of transcription factors involved in leukemia. It is a component of the positive transcription elongation factor b (P-TEFb) complex. A chromosomal translocation involving this gene and MLL gene on chromosome 11 is found in infant acute lymphoblastic leukemia with ins.
Synonyms:	AF5Q31; MCEF; MGC75036



[View online »](#)

## Product images:



Host: Rabbit  
Target Name: AFF4  
Sample Tissue: Placenta Lysate  
Antibody Dilution: 1.0 $\mu$ g/ml

Host: Rabbit  
Target Name: AFF4  
Sample Type: Placenta lysates  
Antibody Dilution: 1.0ug/ml