

Product datasheet for **TA359363**

ALDH1A1 Rabbit Polyclonal Antibody

Product data:

Product Type:	Primary Antibodies
Applications:	WB
Reactivity:	Human
Host:	Rabbit
Clonality:	Polyclonal
Immunogen:	The immunogen is a synthetic peptide directed towards the C-terminal region of Human ALDH1A1
Specificity:	Expected reactivity: Human
Formulation:	Liquid. Purified antibody supplied in 1x PBS buffer with 0.09% (w/v) sodium azide and 2% sucrose. <i>Note that this product is shipped as lyophilized powder to China customers.</i>
Concentration:	lot specific
Purification:	Affinity Purified
Conjugation:	Unconjugated
Storage:	For short term use, store at 2-8°C up to 1 week. For long term storage, store at -20°C in small aliquots to prevent freeze-thaw cycles.
Stability:	Shelf life: one year from despatch.
Predicted Protein Size:	55kDa
Gene Name:	aldehyde dehydrogenase 1 family member A1
Database Link:	XP_005251857 Entrez Gene 216 Human P00352



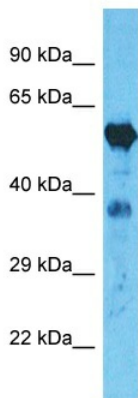
[View online »](#)

Background:

The protein encoded by this gene belongs to the aldehyde dehydrogenase family. Aldehyde dehydrogenase is the next enzyme after alcohol dehydrogenase in the major pathway of alcohol metabolism. There are two major aldehyde dehydrogenase isozymes in the liver, cytosolic and mitochondrial, which are encoded by distinct genes, and can be distinguished by their electrophoretic mobility, kinetic properties, and subcellular localization. This gene encodes the cytosolic isozyme. Studies in mice show that through its role in retinol metabolism, this gene may also be involved in the regulation of the metabolic responses to high-fat diet.

Synonyms:

ALDC; ALDH-E1; ALDH1; ALDH11; ALHDII; MGC2318; PUMB1; RALDH1

Product images:

Host: Rabbit
Target Name: ALDH1A1
Sample Tissue: A549 Cell Lysate
Antibody Dilution: 1.0µg/ml

Host: Rabbit
Target Name: ALDH1A1
Sample Type: A549 Whole Cell Lysates
Antibody Dilution: 1.0ug/ml