

## Product datasheet for **TA359354**

### REV1 Rabbit Polyclonal Antibody

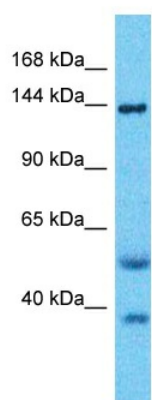
#### Product data:

Product Type:	Primary Antibodies
Applications:	WB
Reactivity:	Human
Host:	Rabbit
Clonality:	Polyclonal
Immunogen:	The immunogen is a synthetic peptide directed towards the C-terminal region of Human REV1
Specificity:	<b>Expected reactivity:</b> Human
Formulation:	Liquid. Purified antibody supplied in 1x PBS buffer with 0.09% (w/v) sodium azide and 2% sucrose. <i>Note that this product is shipped as lyophilized powder to China customers.</i>
Concentration:	lot specific
Purification:	Affinity Purified
Conjugation:	Unconjugated
Storage:	For short term use, store at 2-8°C up to 1 week. For long term storage, store at -20°C in small aliquots to prevent freeze-thaw cycles.
Stability:	Shelf life: one year from despatch.
Predicted Protein Size:	137kDa
Gene Name:	REV1, DNA directed polymerase
Database Link:	<a href="#">XP_005264024</a> <a href="#">Entrez Gene 51455 Human</a> <a href="#">Q9UBZ9</a>
Background:	This gene encodes a protein with similarity to the <i>S. cerevisiae</i> mutagenesis protein Rev1. The Rev1 proteins contain a BRCT domain, which is important in protein-protein interactions. A suggested role for the human Rev1-like protein is as a scaffold that recruits DNA polymerases involved in translesion synthesis (TLS) of damaged DNA. Two alternatively spliced transcript variants that encode different proteins have been found.
Synonyms:	AIBP80; FLJ21523; MGC26225; MGC163283; REV1-like; REV1L



[View online »](#)

## Product images:



Host: Rabbit  
Target Name: REV1  
Sample Tissue: Fetal Lung Lysate  
Antibody Dilution: 1.0 $\mu$ g/ml

Host: Rabbit  
Target Name: REV1  
Sample Type: Fetal Lung lysates  
Antibody Dilution: 1.0 $\mu$ g/ml