

Product datasheet for **TA359349**

MPDU1 Rabbit Polyclonal Antibody

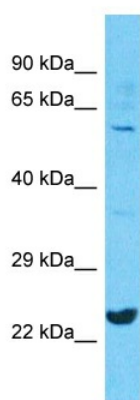
Product data:

Product Type:	Primary Antibodies
Applications:	WB
Reactivity:	Human
Host:	Rabbit
Clonality:	Polyclonal
Immunogen:	The immunogen is a synthetic peptide directed towards the C-terminal region of Human MPDU1
Specificity:	Expected reactivity: Human
Formulation:	Liquid. Purified antibody supplied in 1x PBS buffer with 0.09% (w/v) sodium azide and 2% sucrose. <i>Note that this product is shipped as lyophilized powder to China customers.</i>
Concentration:	lot specific
Purification:	Affinity Purified
Conjugation:	Unconjugated
Storage:	For short term use, store at 2-8°C up to 1 week. For long term storage, store at -20°C in small aliquots to prevent freeze-thaw cycles.
Stability:	Shelf life: one year from despatch.
Predicted Protein Size:	27kDa
Gene Name:	mannose-P-dolichol utilization defect 1
Database Link:	NP_004861 Entrez Gene 9526 Human O75352
Background:	This gene encodes an endoplasmic reticulum membrane protein that is required for utilization of the mannose donor mannose-P-dolichol in the synthesis of lipid-linked oligosaccharides and glycosylphosphatidylinositols. Mutations in this gene result in congenital disorder of glycosylation type If. Alternative splicing results in multiple transcript variants.
Synonyms:	CDGIf; FLJ14836; HBEBP2BPA; Lec35; My008; PP3958; PQLC5; SL15



[View online »](#)

Product images:



Host: Rabbit
Target Name: MPDU1
Sample Tissue: A549 Cell Lysate
Antibody Dilution: 1.0 μ g/ml

Host: Rabbit
Target Name: MPDU1
Sample Type: A549 Whole Cell lysates
Antibody Dilution: 1.0 μ g/ml