

## Product datasheet for **TA359347**

### G3BP2 Rabbit Polyclonal Antibody

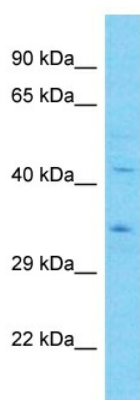
#### Product data:

Product Type:	Primary Antibodies
Applications:	WB
Reactivity:	Human
Host:	Rabbit
Clonality:	Polyclonal
Immunogen:	The immunogen is a synthetic peptide directed towards the middle region of Human G3BP2
Specificity:	<b>Expected reactivity:</b> Human
Formulation:	Liquid. Purified antibody supplied in 1x PBS buffer with 0.09% (w/v) sodium azide and 2% sucrose.
Concentration:	lot specific
Purification:	Affinity Purified
Conjugation:	Unconjugated
Storage:	For short term use, store at 2-8°C up to 1 week. For long term storage, store at -20°C in small aliquots to prevent freeze-thaw cycles.
Stability:	Shelf life: one year from despatch.
Predicted Protein Size:	49kDa
Gene Name:	G3BP stress granule assembly factor 2
Database Link:	<a href="#">Entrez Gene 9908 Human Q9UN86-2</a>
Background:	G3BP2 is a probable scaffold protein that may be involved in mRNA transport.
Synonyms:	G3BP-2; KIAA0660



[View online »](#)

## Product images:



Host: Rabbit  
Target Name: G3BP2  
Sample Tissue: 293T Cell Lysate  
Antibody Dilution: 1.0 $\mu$ g/ml

Host: Rabbit  
Target Name: G3BP2  
Sample Type: 293T Whole cell lysates  
Antibody Dilution: 1.0ug/ml