

Product datasheet for **TA359340**

TMEFF1 Rabbit Polyclonal Antibody

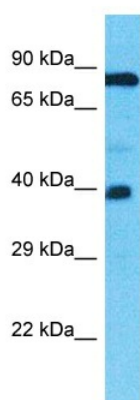
Product data:

Product Type:	Primary Antibodies
Applications:	WB
Reactivity:	Human
Host:	Rabbit
Clonality:	Polyclonal
Immunogen:	The immunogen is a synthetic peptide directed towards the N-terminal region of Human TMEFF1
Specificity:	Expected reactivity: Human
Formulation:	Liquid. Purified antibody supplied in 1x PBS buffer with 0.09% (w/v) sodium azide and 2% sucrose. <i>Note that this product is shipped as lyophilized powder to China customers.</i>
Concentration:	lot specific
Purification:	Affinity Purified
Conjugation:	Unconjugated
Storage:	For short term use, store at 2-8°C up to 1 week. For long term storage, store at -20°C in small aliquots to prevent freeze-thaw cycles.
Stability:	Shelf life: one year from despatch.
Predicted Protein Size:	37kDa
Gene Name:	transmembrane protein with EGF like and two follistatin like domains 1
Database Link:	Entrez Gene 8577 Human Q8IYR6-2
Background:	TMEFF1 may inhibit NODAL and BMP signaling during neural patterning. It may be a tumor suppressor in brain cancers.
Synonyms:	C9orf2; H7365; tomoregulin-1; TR-1



[View online »](#)

Product images:



Host: Rabbit
Target Name: TMEFF1
Sample Tissue: 786-0 Cell Lysate
Antibody Dilution: 1.0 μ g/ml

Host: Rabbit
Target Name: TMEFF1
Sample Type: 786-0 Whole Cell lysates
Antibody Dilution: 1.0ug/ml