

Product datasheet for **TA359336**

DCAF16 Rabbit Polyclonal Antibody

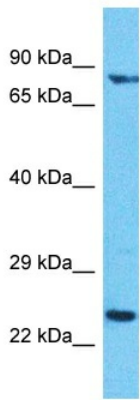
Product data:

Product Type:	Primary Antibodies
Applications:	WB
Reactivity:	Human
Host:	Rabbit
Clonality:	Polyclonal
Immunogen:	The immunogen is a synthetic peptide directed towards the N-terminal region of Human DCAF16
Specificity:	Expected reactivity: Human
Formulation:	Liquid. Purified antibody supplied in 1x PBS buffer with 0.09% (w/v) sodium azide and 2% sucrose.
Concentration:	lot specific
Purification:	Affinity Purified
Conjugation:	Unconjugated
Storage:	For short term use, store at 2-8°C up to 1 week. For long term storage, store at -20°C in small aliquots to prevent freeze-thaw cycles.
Stability:	Shelf life: one year from despatch.
Predicted Protein Size:	23kDa
Gene Name:	DDB1 and CUL4 associated factor 16
Database Link:	XP_005248228 Entrez Gene 54876 Human Q9NXF7
Background:	DCAF16 may function as a substrate receptor for CUL4-DDB1 E3 ubiquitin-protein ligase complex.
Synonyms:	C4orf30



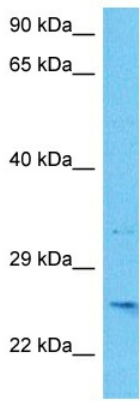
[View online »](#)

Product images:



Host: Rabbit
 Target Name: DCAF16
 Sample Tissue: HepG2 Cell Lysate
 Antibody Dilution: 1.0µg/ml

Host: Rabbit
 Target Name: DCAF16
 Sample Type: HepG2 Whole Cell lysates
 Antibody Dilution: 1.0ug/ml



Host: Rabbit
 Target Name: DCAF16
 Sample Type: HepG2 Cell Lysate
 Antibody Dilution: 1.0µg/ml

Host: Rabbit
 Target Name: DCAF16
 Sample Tissue: Human HepG2 Whole Cell
 Antibody Dilution: 1ug/ml