

## Product datasheet for **TA359334**

### **FAM118B Rabbit Polyclonal Antibody**

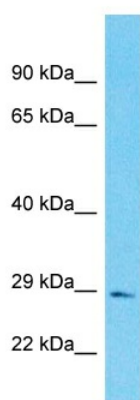
#### **Product data:**

Product Type:	Primary Antibodies
Applications:	WB
Reactivity:	Human
Host:	Rabbit
Clonality:	Polyclonal
Immunogen:	The immunogen is a synthetic peptide directed towards the N-terminal region of human FAM118B
Specificity:	<b>Expected reactivity:</b> Human
Formulation:	Liquid. Purified antibody supplied in 1x PBS buffer with 0.09% (w/v) sodium azide and 2% sucrose.
Concentration:	lot specific
Purification:	Affinity Purified
Conjugation:	Unconjugated
Storage:	For short term use, store at 2-8°C up to 1 week. For long term storage, store at -20°C in small aliquots to prevent freeze-thaw cycles.
Stability:	Shelf life: one year from despatch.
Predicted Protein Size:	30kDa
Gene Name:	family with sequence similarity 118 member B
Database Link:	<a href="#">NP_078832.1</a> <a href="#">Entrez Gene 79607 Human</a> <a href="#">Q9BPY3</a>
Synonyms:	FLJ21103



[View online »](#)

## Product images:



Host: Rabbit  
Target Name: FAM118B  
Sample Tissue: Fetal Lung Lysate  
Antibody Dilution: 1.0µg/ml

Host: Rabbit  
Target Name: FAM118B  
Sample Type: Fetal Lung lysates  
Antibody Dilution: 1.0ug/ml