

## Product datasheet for **TA359332**

### CEP78 Rabbit Polyclonal Antibody

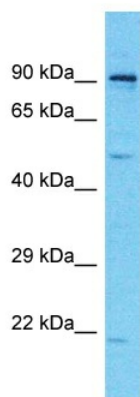
#### Product data:

Product Type:	Primary Antibodies
Applications:	WB
Reactivity:	Human
Host:	Rabbit
Clonality:	Polyclonal
Immunogen:	The immunogen is a synthetic peptide directed towards the C-terminal region of Human CEP78
Specificity:	<b>Expected reactivity:</b> Human
Formulation:	Liquid. Purified antibody supplied in 1x PBS buffer with 0.09% (w/v) sodium azide and 2% sucrose.
Concentration:	lot specific
Purification:	Affinity Purified
Conjugation:	Unconjugated
Storage:	For short term use, store at 2-8°C up to 1 week. For long term storage, store at -20°C in small aliquots to prevent freeze-thaw cycles.
Stability:	Shelf life: one year from despatch.
Predicted Protein Size:	75kDa
Gene Name:	centrosomal protein 78
Database Link:	<a href="#">NP_115547</a> <a href="#">Entrez Gene 84131 Human</a> <a href="#">Q5JTW2</a>
Background:	The function of this protein remains unknown.
Synonyms:	C9orf81; FLJ12643; FLJ52093; IP63; MGC135040



[View online »](#)

## Product images:



Host: Rabbit  
Target Name: CEP78  
Sample Tissue: THP-1 Cell Lysate  
Antibody Dilution: 1.0µg/ml

Host: Rabbit  
Target Name: CEP78  
Sample Type: THP-1 Whole Cell lysates  
Antibody Dilution: 1.0ug/ml