

Product datasheet for **TA359330**

EFCAB6 Rabbit Polyclonal Antibody

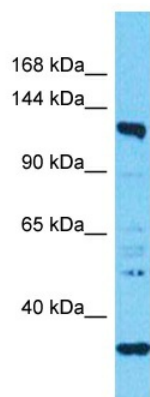
Product data:

Product Type:	Primary Antibodies
Applications:	WB
Reactivity:	Human
Host:	Rabbit
Clonality:	Polyclonal
Immunogen:	The immunogen is a synthetic peptide directed towards the N-terminal region of Human EFCAB6
Specificity:	Expected reactivity: Human
Formulation:	Liquid. Purified antibody supplied in 1x PBS buffer with 0.09% (w/v) sodium azide and 2% sucrose.
Concentration:	lot specific
Purification:	Affinity Purified
Conjugation:	Unconjugated
Storage:	For short term use, store at 2-8°C up to 1 week. For long term storage, store at -20°C in small aliquots to prevent freeze-thaw cycles.
Stability:	Shelf life: one year from despatch.
Predicted Protein Size:	137kDa
Gene Name:	EF-hand calcium binding domain 6
Database Link:	Entrez Gene 64800 Human Q5THR3-5
Background:	This gene encodes a protein which directly binds the oncogene DJ-1 and androgen receptor to form a ternary complex in cells. This binding protein recruits histone-deacetylase complexes in order to repress transcription activity of androgen receptor. This protein may also play a role in spermatogenesis and fertilization. Multiple transcript variants encoding different isoforms have been found for this gene.
Synonyms:	dj185D5.1; DJBP; FLJ23588; HSCBCIP1; KIAA1672



[View online »](#)

Product images:



Host: Rabbit
Target Name: EFCAB6
Sample Tissue: OVCAR-3 Cell Lysate
Antibody Dilution: 1.0 μ g/ml

Host: Rabbit
Target Name: EFCAB6
Sample Type: OVCAR-3 Whole Cell lysates
Antibody Dilution: 1.0ug/ml