

Product datasheet for **TA359328**

C14orf106 (MIS18BP1) Rabbit Polyclonal Antibody

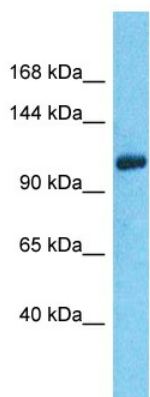
Product data:

Product Type:	Primary Antibodies
Applications:	WB
Reactivity:	Human
Host:	Rabbit
Clonality:	Polyclonal
Immunogen:	The immunogen is a synthetic peptide directed towards the C-terminal region of Human MIS18BP1
Specificity:	Expected reactivity: Human
Formulation:	Liquid. Purified antibody supplied in 1x PBS buffer with 0.09% (w/v) sodium azide and 2% sucrose. <i>Note that this product is shipped as lyophilized powder to China customers.</i>
Concentration:	lot specific
Purification:	Affinity Purified
Conjugation:	Unconjugated
Storage:	For short term use, store at 2-8°C up to 1 week. For long term storage, store at -20°C in small aliquots to prevent freeze-thaw cycles.
Stability:	Shelf life: one year from despatch.
Predicted Protein Size:	124kDa
Gene Name:	MIS18 binding protein 1
Database Link:	XP_005267890 Entrez Gene 55320 Human Q6P0N0
Background:	MIS18BP1 is required for recruitment of CENPA to centromeres and normal chromosome segregation during mitosis.
Synonyms:	C14orf106; HSA242977; KNL2; M18BP1



[View online »](#)

Product images:



Host: Rabbit
Target Name: MIS18BP1
Sample Tissue: 293T Cell Lysate
Antibody Dilution: 1.0µg/ml

Host: Rabbit
Target Name: MIS18BP1
Sample Type: 293T Whole Cell lysates
Antibody Dilution: 1.0ug/ml