

## Product datasheet for **TA359323**

### ATPBD4 (DPH6) Rabbit Polyclonal Antibody

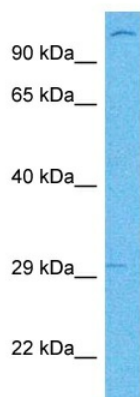
#### Product data:

Product Type:	Primary Antibodies
Applications:	WB
Reactivity:	Human
Host:	Rabbit
Clonality:	Polyclonal
Immunogen:	The immunogen is a synthetic peptide directed towards the C-terminal region of Human DPH6
Specificity:	<b>Expected reactivity:</b> Human
Formulation:	Liquid. Purified antibody supplied in 1x PBS buffer with 0.09% (w/v) sodium azide and 2% sucrose. <i>Note that this product is shipped as lyophilized powder to China customers.</i>
Concentration:	lot specific
Purification:	Affinity purified
Conjugation:	Unconjugated
Storage:	For short term use, store at 2-8°C up to 1 week. For long term storage, store at -20°C in small aliquots to prevent freeze-thaw cycles.
Stability:	Shelf life: one year from despatch.
Predicted Protein Size:	29 kDa
Gene Name:	diphthamine biosynthesis 6
Database Link:	<a href="#">NP_542381.1</a> <a href="#">Entrez Gene 89978 Human Q7L8W6</a>
Background:	DPH6 is a amidase that catalyzes the last step of diphthamide biosynthesis using ammonium and ATP. Diphthamide biosynthesis consists in the conversion of an L-histidine residue in the translation elongation factor (EEF2) to diphthamide.
Synonyms:	ATPBD4; ATPBD4-AS1



[View online »](#)

## Product images:



Host: Rabbit  
Target Name: DPH6  
Sample Tissue: Fetal Lung Lysate  
Antibody Dilution: 1.0 $\mu$ g/ml

WB Suggested Anti-DPH6 antibody Titration: 1  
ug/mL  
Sample Type: Human Fetal Lung