

## Product datasheet for **TA359321**

### ICEBERG (CARD18) Rabbit Polyclonal Antibody

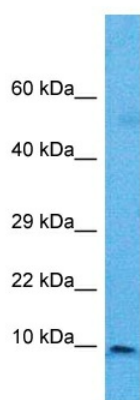
#### Product data:

Product Type:	Primary Antibodies
Applications:	WB
Reactivity:	Human
Host:	Rabbit
Clonality:	Polyclonal
Immunogen:	The immunogen for Anti-CARD18 antibody is: synthetic peptide directed towards the middle region of Human CAR18
Specificity:	<b>Expected reactivity:</b> Human
Formulation:	Liquid. Purified antibody supplied in 1x PBS buffer with 0.09% (w/v) sodium azide and 2% sucrose. <i>Note that this product is shipped as lyophilized powder to China customers.</i>
Concentration:	lot specific
Purification:	Affinity purified
Conjugation:	Unconjugated
Storage:	For short term use, store at 2-8°C up to 1 week. For long term storage, store at -20°C in small aliquots to prevent freeze-thaw cycles.
Stability:	Shelf life: one year from despatch.
Predicted Protein Size:	9 kDa
Gene Name:	caspase recruitment domain family member 18
Database Link:	<a href="#">NP_067546.1</a> <a href="#">Entrez Gene 59082 Human</a> <a href="#">P57730</a>
Synonyms:	ICEBERG; pseudo-ICE; UNQ5804



[View online »](#)

## Product images:



Host: Rabbit  
Target Name: CAR18  
Sample Tissue: Ovary Tumor Lysate  
Antibody Dilution: 1.0 $\mu$ g/ml

WB Suggested Anti-CAR18 antibody Titration: 1  
ug/mL  
Sample Type: Human Ovary Tumor