

Product datasheet for **TA359320**

RBM41 Rabbit Polyclonal Antibody

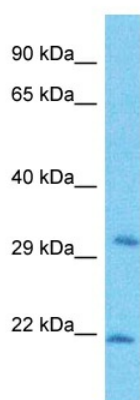
Product data:

Product Type:	Primary Antibodies
Applications:	WB
Reactivity:	Human
Host:	Rabbit
Clonality:	Polyclonal
Immunogen:	The immunogen is a synthetic peptide directed towards the middle region of Human RBM41
Specificity:	Expected reactivity: Human
Formulation:	Liquid. Purified antibody supplied in 1x PBS buffer with 0.09% (w/v) sodium azide and 2% sucrose. <i>Note that this product is shipped as lyophilized powder to China customers.</i>
Concentration:	lot specific
Purification:	Affinity Purified
Conjugation:	Unconjugated
Storage:	For short term use, store at 2-8°C up to 1 week. For long term storage, store at -20°C in small aliquots to prevent freeze-thaw cycles.
Stability:	Shelf life: one year from despatch.
Predicted Protein Size:	34kDa
Gene Name:	RNA binding motif protein 41
Database Link:	NP_060771 Entrez Gene 55285 Human Q96IZ5-3
Background:	RBM41 May bind RNA.
Synonyms:	bB383K5.1; FLJ11016; FLJ13670



[View online »](#)

Product images:



Host: Rabbit
Target Name: RBM41
Sample Tissue: ACHN Cell Lysate
Antibody Dilution: 1.0 μ g/ml

Host: Rabbit
Target Name: RBM41
Sample Type: ACHN Whole Cell lysates
Antibody Dilution: 1.0ug/ml