

Product datasheet for **TA359319**

KIAA0664 (CLUH) Rabbit Polyclonal Antibody

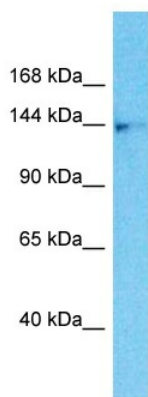
Product data:

Product Type:	Primary Antibodies
Applications:	WB
Reactivity:	Human
Host:	Rabbit
Clonality:	Polyclonal
Immunogen:	The immunogen is a synthetic peptide directed towards the C-terminal region of Human CLUH
Specificity:	Expected reactivity: Human
Formulation:	Liquid. Purified antibody supplied in 1x PBS buffer with 0.09% (w/v) sodium azide and 2% sucrose. <i>Note that this product is shipped as lyophilized powder to China customers.</i>
Concentration:	lot specific
Purification:	Affinity Purified
Conjugation:	Unconjugated
Storage:	For short term use, store at 2-8°C up to 1 week. For long term storage, store at -20°C in small aliquots to prevent freeze-thaw cycles.
Stability:	Shelf life: one year from despatch.
Predicted Protein Size:	143kDa
Gene Name:	clustered mitochondria (cluA/CLU1) homolog
Database Link:	NP_056044 Entrez Gene 23277 Human O75153
Background:	CLUH is involved in proper cytoplasmic distribution of mitochondria.
Synonyms:	1300001I01Rik; Kiaa0664; mKIAA0664; RP23-194P5.1



[View online »](#)

Product images:



Host: Rabbit
Target Name: CLUH
Sample Tissue: MDA-MB-435s Cell Lysate
Antibody Dilution: 1.0 μ g/ml

Host: Rabbit
Target Name: CLUH
Sample Type: MDA-MB-435s Whole Cell lysates
Antibody Dilution: 1.0ug/ml