

## Product datasheet for **TA359315**

### **SULT1C3 Rabbit Polyclonal Antibody**

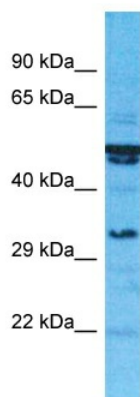
#### **Product data:**

Product Type:	Primary Antibodies
Applications:	WB
Reactivity:	Human
Host:	Rabbit
Clonality:	Polyclonal
Immunogen:	The immunogen is a synthetic peptide directed towards the C-terminal region of Human SULT1C3
Specificity:	<b>Expected reactivity:</b> Human
Formulation:	Liquid. Purified antibody supplied in 1x PBS buffer with 0.09% (w/v) sodium azide and 2% sucrose.
Concentration:	lot specific
Purification:	Affinity Purified
Conjugation:	Unconjugated
Storage:	For short term use, store at 2-8°C up to 1 week. For long term storage, store at -20°C in small aliquots to prevent freeze-thaw cycles.
Stability:	Shelf life: one year from despatch.
Predicted Protein Size:	33kDa
Gene Name:	sulfotransferase family 1C member 3
Database Link:	<a href="#">NP_001008743</a> <a href="#">Entrez Gene 442038 Human</a> <a href="#">Q6IMI6</a>
Background:	SULT1C3 is a sulfotransferase that utilizes 3'-phospho-5'-adenylyl sulfate (PAPS) as sulfonate donor and has low sulphotransferase activity towards various substrates with alcohol groups (in vitro). It may catalyze the sulfate conjugation of xenobiotic compounds and endogenous substrates. .
Synonyms:	SULT1C3



[View online »](#)

## Product images:



Host: Rabbit  
Target Name: SULT1C3  
Sample Tissue: 721\_B Cell Lysate  
Antibody Dilution: 1.0µg/ml

Host: Rabbit  
Target Name: SULT1C3  
Sample Type: 721\_B Whole Cell lysates  
Antibody Dilution: 1.0ug/ml