

Product datasheet for **TA359314**

SSNA1 Rabbit Polyclonal Antibody

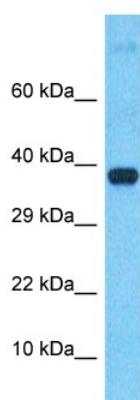
Product data:

Product Type:	Primary Antibodies
Applications:	WB
Reactivity:	Human
Host:	Rabbit
Clonality:	Polyclonal
Immunogen:	The immunogen is a synthetic peptide directed towards the C-terminal region of human SSNA1
Specificity:	Expected reactivity: Guinea Pig, Human, Mouse, Rat Homology: Guinea Pig: 86%; Human: 100%; Mouse: 86%; Rat: 86%
Formulation:	Liquid. Purified antibody supplied in 1x PBS buffer with 0.09% (w/v) sodium azide and 2% sucrose.
Concentration:	lot specific
Purification:	Affinity Purified
Conjugation:	Unconjugated
Storage:	For short term use, store at 2-8°C up to 1 week. For long term storage, store at -20°C in small aliquots to prevent freeze-thaw cycles.
Stability:	Shelf life: one year from despatch.
Predicted Protein Size:	39kDa
Gene Name:	SS nuclear autoantigen 1
Database Link:	NP_003722.2 Entrez Gene 8636 Human O43805
Synonyms:	N14; NA-14; NA14



[View online »](#)

Product images:



Host: Rabbit
Target Name: USP4
Sample Tissue: Fetal Liver Lysate
Antibody Dilution: 1.0 μ g/ml

Host: Rabbit
Target Name: USP4
Sample Type: Fetal Liver lysates
Antibody Dilution: 1.0ug/ml