

Product datasheet for **TA359313**

SYCP2L Rabbit Polyclonal Antibody

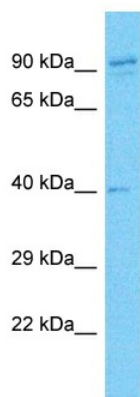
Product data:

Product Type:	Primary Antibodies
Applications:	WB
Reactivity:	Human
Host:	Rabbit
Clonality:	Polyclonal
Immunogen:	The immunogen is a synthetic peptide directed towards the C-terminal region of Human SYCP2L
Specificity:	Expected reactivity: Human Homology: Human: 100%
Formulation:	Liquid. Purified antibody supplied in 1x PBS buffer with 0.09% (w/v) sodium azide and 2% sucrose.
Concentration:	lot specific
Purification:	Affinity Purified
Conjugation:	Unconjugated
Storage:	For short term use, store at 2-8°C up to 1 week. For long term storage, store at -20°C in small aliquots to prevent freeze-thaw cycles.
Stability:	Shelf life: one year from despatch.
Predicted Protein Size:	90kDa
Gene Name:	synaptonemal complex protein 2 like
Database Link:	NP_001035364 Entrez Gene 221711 Human Q5T4T6
Background:	The function of this protein remains unknown.
Synonyms:	C6orf177; dj62D2.1; hsNO145; NO145; SCP-2-like



[View online »](#)

Product images:



Host: Rabbit
Target Name: SYCP2L
Sample Tissue: 786-0 Cell Lysate
Antibody Dilution: 1.0µg/ml

Host: Rabbit
Target Name: SYCP2L
Sample Type: 786-0 Whole Cell lysates
Antibody Dilution: 1.0ug/ml