

## Product datasheet for **TA359309**

### **FAM59A (GAREM1) Rabbit Polyclonal Antibody**

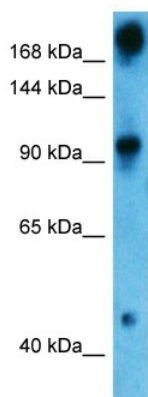
#### **Product data:**

Product Type:	Primary Antibodies
Applications:	WB
Reactivity:	Human
Host:	Rabbit
Clonality:	Polyclonal
Immunogen:	The immunogen is a synthetic peptide directed towards the C-terminal region of Human GAREM
Specificity:	<b>Expected reactivity:</b> Human
Formulation:	Liquid. Purified antibody supplied in 1x PBS buffer with 0.09% (w/v) sodium azide and 2% sucrose.
Concentration:	lot specific
Purification:	Affinity purified
Conjugation:	Unconjugated
Storage:	For short term use, store at 2-8°C up to 1 week. For long term storage, store at -20°C in small aliquots to prevent freeze-thaw cycles.
Stability:	Shelf life: one year from despatch.
Predicted Protein Size:	96 kDa
Gene Name:	GRB2 associated regulator of MAPK1 subtype 1
Database Link:	<a href="#">Entrez Gene 64762 Human Q9H706</a>
Background:	This gene encodes an adaptor protein which functions in the epidermal growth factor (EGF) receptor-mediated signaling pathway. Multiple transcript variants encoding different isoforms have been found for this gene.



[View online »](#)

## Product images:



Host: Rabbit  
Target Name: GAREM  
Sample Tissue: OVCAR-3 Cell Lysate  
Antibody Dilution: 2.0µg/ml

Host: Rabbit  
Target Name: GAREM  
Sample Type: OVCAR-3 Whole Cell  
Antibody Dilution: 1.0ug/ml