

Product datasheet for **TA359305**

NUDCD2 Rabbit Polyclonal Antibody

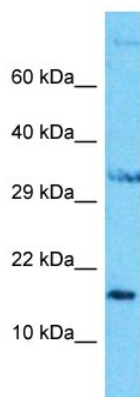
Product data:

Product Type:	Primary Antibodies
Applications:	WB
Reactivity:	Human
Host:	Rabbit
Clonality:	Polyclonal
Immunogen:	The immunogen is a synthetic peptide directed towards the C-terminal region of Human NUDCD2
Specificity:	Expected reactivity: Human
Formulation:	Liquid. Purified antibody supplied in 1x PBS buffer with 0.09% (w/v) sodium azide and 2% sucrose. <i>Note that this product is shipped as lyophilized powder to China customers.</i>
Concentration:	lot specific
Purification:	Affinity Purified
Conjugation:	Unconjugated
Storage:	For short term use, store at 2-8°C up to 1 week. For long term storage, store at -20°C in small aliquots to prevent freeze-thaw cycles.
Stability:	Shelf life: one year from despatch.
Predicted Protein Size:	17kDa
Gene Name:	NudC domain containing 2
Database Link:	NP_660309 Entrez Gene 134492 Human Q8WVJ2
Background:	NUDCD2 may regulate the LIS1/dynein pathway by stabilizing LIS1 with Hsp90 chaperone.
Synonyms:	DKFZp686E10109



[View online »](#)

Product images:



Host: Rabbit
Target Name: NUDCD2
Sample Tissue: HepG2 Cell Lysate
Antibody Dilution: 1.0 μ g/ml

Host: Rabbit
Target Name: NUDCD2
Sample Type: HepG2 Whole Cell lysates
Antibody Dilution: 1.0ug/ml