

## Product datasheet for TA359303

### CCDC28A Rabbit Polyclonal Antibody

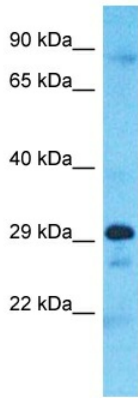
#### Product data:

Product Type:	Primary Antibodies
Applications:	WB
Reactivity:	Human
Host:	Rabbit
Clonality:	Polyclonal
Immunogen:	The immunogen is a synthetic peptide directed towards the C-terminal region of Human CCDC28A
Specificity:	<b>Expected reactivity:</b> Cow, Dog, Guinea Pig, Horse, Human, Mouse, Rabbit, Rat <b>Homology:</b> Cow: 86%; Dog: 100%; Guinea Pig: 100%; Horse: 100%; Human: 100%; Mouse: 86%; Rabbit: 93%; Rat: 93%
Formulation:	Liquid. Purified antibody supplied in 1x PBS buffer with 0.09% (w/v) sodium azide and 2% sucrose.
Concentration:	lot specific
Purification:	Affinity Purified
Conjugation:	Unconjugated
Storage:	For short term use, store at 2-8°C up to 1 week. For long term storage, store at -20°C in small aliquots to prevent freeze-thaw cycles.
Stability:	Shelf life: one year from despatch.
Predicted Protein Size:	30kDa
Gene Name:	coiled-coil domain containing 28A
Database Link:	<a href="#">Entrez Gene 25901 Human Q8IWP9</a>
Background:	This gene is located in a region close to the locus of the pseudogene of chemokine (C-C motif) receptor-like 1 on chromosome 6. The specific function of this gene has not yet been determined.
Synonyms:	C6orf80; CCRL1AP; DKFZp586D0623; MGC131913



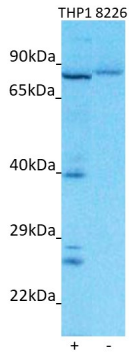
[View online »](#)

**Product images:**



Host: Rabbit  
 Target Name: CCDC28A  
 Sample Tissue: A549 Cell Lysate  
 Antibody Dilution: 1.0µg/ml

Host: Rabbit  
 Target Name: CCDC28A  
 Sample Type: A549 Whole cell lysates  
 Antibody Dilution: 1.0ug/ml



Host: Rabbit  
 Target Name: CCDC28A  
 Positive Control: ~25ug THP1 Cell Lysate (THP1)  
 Negative Control: ~25ug RPMI-8226 Cell Lysate (8226)  
 Antibody Concentration: 2ug/ml

Host: Rabbit  
 Target: CCDC28A  
 Positive control (+): THP1 Cell Lysate (N30)  
 Negative control (-): RPMI-8226 Cell Lysate (N12)  
 Antibody concentration: 2ug/ml