

Product datasheet for **TA359301**

KIAA0528 (C2CD5) Rabbit Polyclonal Antibody

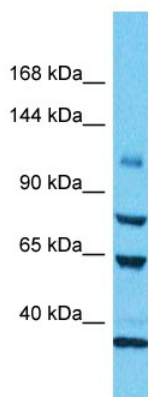
Product data:

Product Type:	Primary Antibodies
Applications:	WB
Reactivity:	Human
Host:	Rabbit
Clonality:	Polyclonal
Immunogen:	The immunogen is a synthetic peptide directed towards the N-terminal region of Human C2CD5
Specificity:	Expected reactivity: Human
Formulation:	Liquid. Purified antibody supplied in 1x PBS buffer with 0.09% (w/v) sodium azide and 2% sucrose. <i>Note that this product is shipped as lyophilized powder to China customers.</i>
Concentration:	lot specific
Purification:	Affinity Purified
Conjugation:	Unconjugated
Storage:	For short term use, store at 2-8°C up to 1 week. For long term storage, store at -20°C in small aliquots to prevent freeze-thaw cycles.
Stability:	Shelf life: one year from despatch.
Predicted Protein Size:	110kDa
Gene Name:	C2 calcium-dependent domain containing 5
Database Link:	Entrez Gene 9847 Human Q86YS7
Background:	C2CD5 is required for insulin-stimulated glucose transport and glucose transporter SLC2A4/GLUT4 translocation from intracellular glucose storage vesicle (GSV) to the plasma membrane (PM) in adipocytes. It binds phospholipid membranes in a calcium-dependent manner and is necessary for the optimal membrane fusion between SLC2A4/GLUT4 GSV and the PM.
Synonyms:	CDP138; KIAA0528



[View online »](#)

Product images:



Host: Rabbit
Target Name: C2CD5
Sample Tissue: 721_B Cell Lysate
Antibody Dilution: 1.0 μ g/ml

Host: Rabbit
Target Name: C2CD5
Sample Type: 721_B Whole Cell lysates
Antibody Dilution: 1.0 μ g/ml