

Product datasheet for **TA359300**

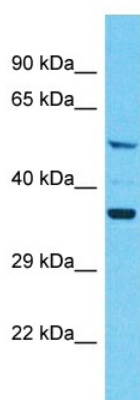
KRT6L (KRT79) Rabbit Polyclonal Antibody

Product data:

Product Type:	Primary Antibodies
Applications:	WB
Reactivity:	Human
Host:	Rabbit
Clonality:	Polyclonal
Immunogen:	The immunogen is a synthetic peptide directed towards the C-terminal region of Human KRT79
Specificity:	Expected reactivity: Human
Formulation:	Liquid. Purified antibody supplied in 1x PBS buffer with 0.09% (w/v) sodium azide and 2% sucrose.
Concentration:	lot specific
Purification:	Affinity Purified
Conjugation:	Unconjugated
Storage:	For short term use, store at 2-8°C up to 1 week. For long term storage, store at -20°C in small aliquots to prevent freeze-thaw cycles.
Stability:	Shelf life: one year from despatch.
Predicted Protein Size:	58kDa
Gene Name:	keratin 79
Database Link:	NP_787028 Entrez Gene 338785 Human Q5XKE5
Background:	Keratins are intermediate filament proteins responsible for the structural integrity of epithelial cells and are subdivided into epithelial keratins and hair keratins. This gene encodes an epithelial keratin that is expressed in skeletal muscle, skin and scalp. The type II keratins are clustered in a region of chromosome 12q13.
Synonyms:	CK-79; Cytokeratin-79; FLJ26646; K6L; K79; KB38; Keratin-6-like; Keratin-6L; Keratin-79; KRT6L



[View online »](#)

Product images:


Host: Rabbit
 Target Name: KRT79
 Sample Tissue: A549 Cell Lysate
 Antibody Dilution: 1.0µg/ml

Host: Rabbit
 Target Name: KRT79
 Sample Type: A549 Whole Cell lysates
 Antibody Dilution: 1.0ug/ml